

Meat Market Report

23/12/19 - 29/12/19

Week

52



**An Roinn Talmhaíochta,
Bia agus Mara**

Department of Agriculture,
Food and the Marine

MARKET SUMMARY

Beef

Deadweight Prices c/100Kg (Including VAT)

	U3	U4	R3	R4	O3	O4	P+3
Steers	385.0	382.0	374.0	372.0	358.0	357.0	326.0
Heifers	395.0	391.0	382.0	381.0	367.0	367.0	326.0
Young Bulls	362.0	386.0	344.0	348.0	332.0	339.0	320.0
Cows			304.0	303.0	279.0	278.0	266.0

Liveweight Prices

*Bull Calf Average Price	€165.9 per head (Excluding VAT)
**Young Store Average Price	€199.0 per 100kg (Excluding VAT)
***Yearling (male & female) Price	€174.0 per 100kg (Excluding VAT)

* Aged 8-28 days ** Aged 180-364 days, Male & Female ***age 365-730 days

Slaughterings

12,424 cattle slaughtered this week, of which steers were 4,337 (35%), heifers 4,634 (37%), young bulls 1,772 (14%) and cows 1,596 (13%). Total YTD slaughter is 1,723,254 compared to 1,787,933 in 2018, a 4% decrease.

Live Trade

121 cattle were exported in the week commencing 23/12/2019, 42 to EU (Except NI). Live exports for 2019 amount to 298,018 compared to 246,360 in 2018, up 21% on 2018 levels.

*This data is provisional and subject to revision.

The next meeting of the Management Committee for the Common Organisation of Agricultural Markets (Animal Products Sector) is 23rd January 2020

CONTENTS:

Page 2: Market Summary Beef
 Page 3: Market Summary Other Meats
 Page 4: Beef Price and Slaughter Summary
 Page 5: Comparative Beef Prices
 Page 6: Steer and Young Bull Price
 Page 7: Heifer and Cow Graphs
 Page 8: Price and Slaughter Graphs
 Page 9: Liveweight Beef Graphs

Page 10: Beef Export Maps
 Page 11: Beef Export Info
 Page 12: Pig price and slaughter graphs
 Page 13: Sheep prices and slaughter
 Page 15: Sheep price and slaughter graphs

MARKET SUMMARY

Pigmeat

Grade E Pig
Prices (Ex.
VAT)

The Grade E Pig price for week commencing 23/12/2019 was €189.97 per 100Kg compared to €138.62 in the same week last year, which represents a 37% increase.

Slaughtering

16,527 pigs were slaughtered in week 52 of which 100 were sows. The cumulative figure for pig slaughterings in 2019 is 3,369,500 which is a 1% decrease with the same point last year.

Sheepmeat

Sheepmeat
Prices (Ex.
VAT)

The national average price for the week commencing 23/12/2019 was €461.21 per 100Kg, an increase of 2% over the same week last year.

Slaughtering

28,300 sheep were slaughtered at sheep export premises the week commencing 23/12/2019, compared to 24,124 in the same week of 2018. Sheep slaughterings for 2019 are 7% down on 2018 at 2,781,661 head.

Live Trade

Total live exports stood at 7,161 head to the end of December 2019 with over 4,555 exports to France.

Poultry

Slaughtering

Cumulative poultry slaughterings for 2019* stand at 106,144,933 birds at the end of week 52, up 8% compared to the same period last year.

*Latest Figures are provisional and subject to change

Dead Weight Prices	W/C	W/C	Same week 2018	% change prev week	% change 2018
	23/12/19	16/12/19	24/12/18		
Steers (R3) (c/kg)	354.7	351.5	369.8	0.9%	-4.1%
Heifers (R3) (c/kg)	362.9	359.2	379.8	1.0%	-4.5%
Young Bulls (U3) (c/kg)	343.3	337.6	368.4	1.7%	-6.8%
Cows (04) (c/kg)	264.1	262.1	270.7	0.8%	-2.4%

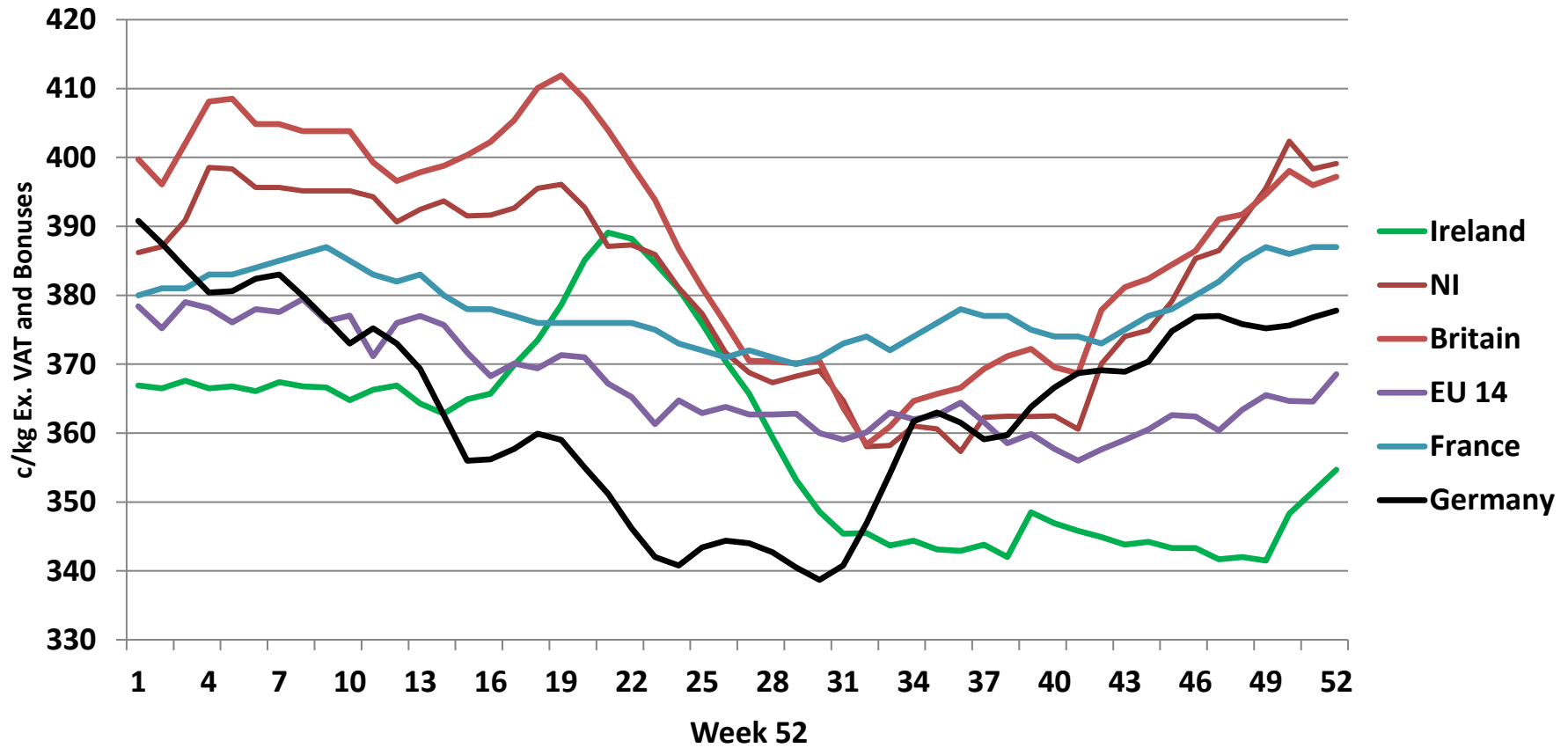
Live Weight Prices	W/C	W/C	Same week 2018	% change previous week	% change 2018
	23/12/19	16/12/19	24/12/18		
Yearlings (Male) (Aged 365 - 730 days) - (€/100Kg)	172	176	173	-2.3%	-0.6%
Yearlings (Female) (Aged 365 - 730 days) - (€/100Kg)	176	183	182	-3.8%	-3.3%
Young Stores (Male & Female) (Aged 180 - 364 days) - (€/100Kg)	199	206	201	-3.4%	-1.0%
Bull Calf (€/head) Dairy	159.3	82.0	109.0	94.1%	46.1%
Bull Calf (€/head) Beef	172.4	207.7	168.1	-17.0%	2.6%

Slaughter Figures	% of weekly figures	W/C	Same week 2018	Year to Date		Change 2019 v 2018	
		23-Dec-19		2019	2018	Head	%
Steers	34.9%	4,337	6,718	628,174	669,105	-40,931	-6.1%
Cows	12.8%	1,596	1,686	347,312	396,516	-49,204	-12.4%
Heifers	37.3%	4,634	4,622	503,918	486,907	17,011	3.5%
Young Bulls	14.3%	1,772	3,546	209,275	204,685	4,590	2.2%
Mature Bulls	0.7%	85	221	34,575	30,720	3,855	12.5%
Total	100%	12,424	16,793	1,723,254	1,787,933	-64,679	-3.6%

821

Live Exports	W/C	Same week	W/C	Year to Date		Change 2019 v 2018	
	23-Dec-19	2018	09-Dec-19	2019	2018	Head	%
Northern Ireland	79	14	811	33,633	24,627	9,006	37%
EU Except NI	42	13	1,619	240,472	201,773	38,699	19%
Third Countries	0	961	0	23,913	19,960	3,953	-
Total	121	988	2,430	298,018	246,360	51,658	21%
Calves YTD:	200,101			Adult YTD:Cattle		97,775	

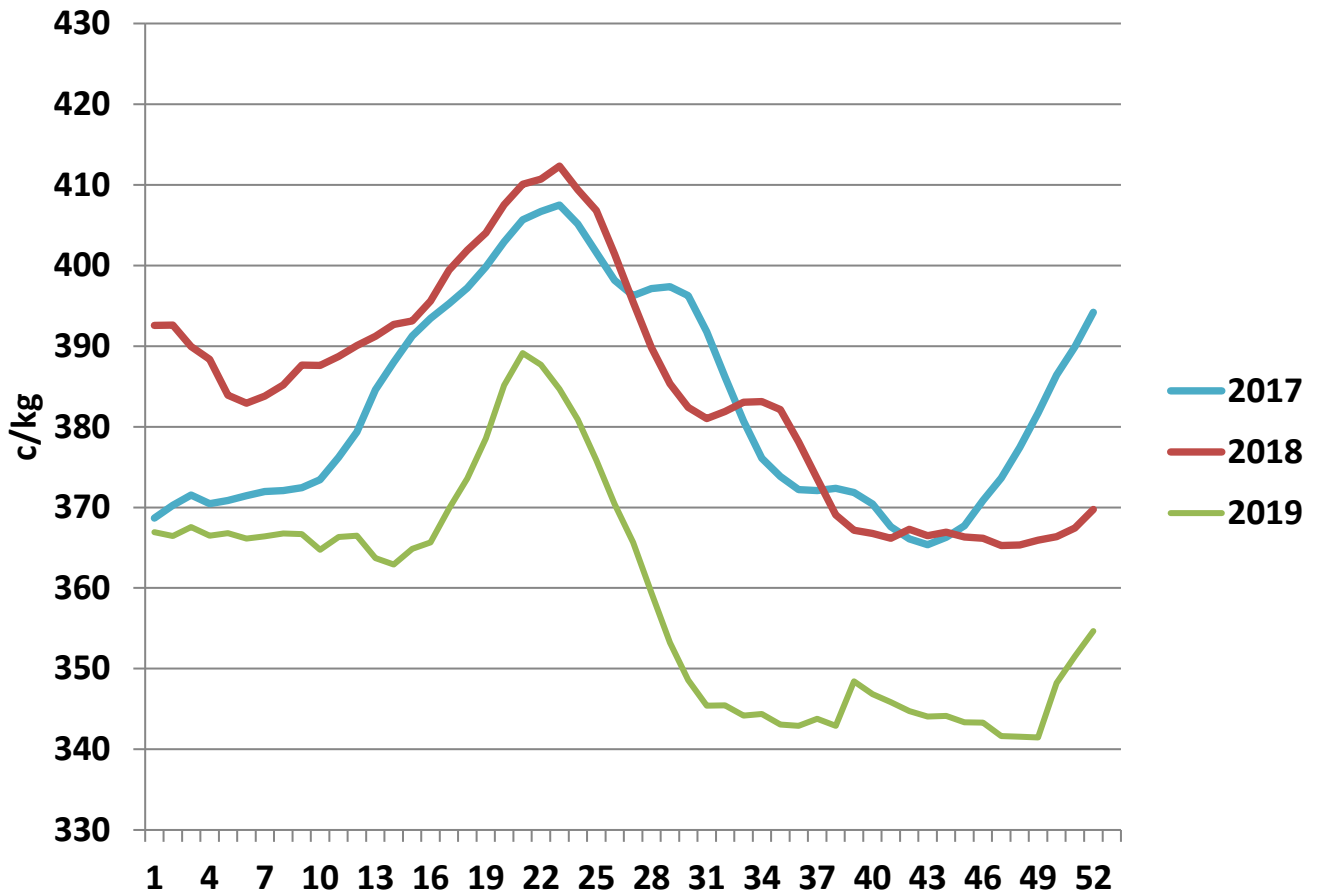
Irish Deadweight Cattle Prices vs Selected Other Markets, 2019



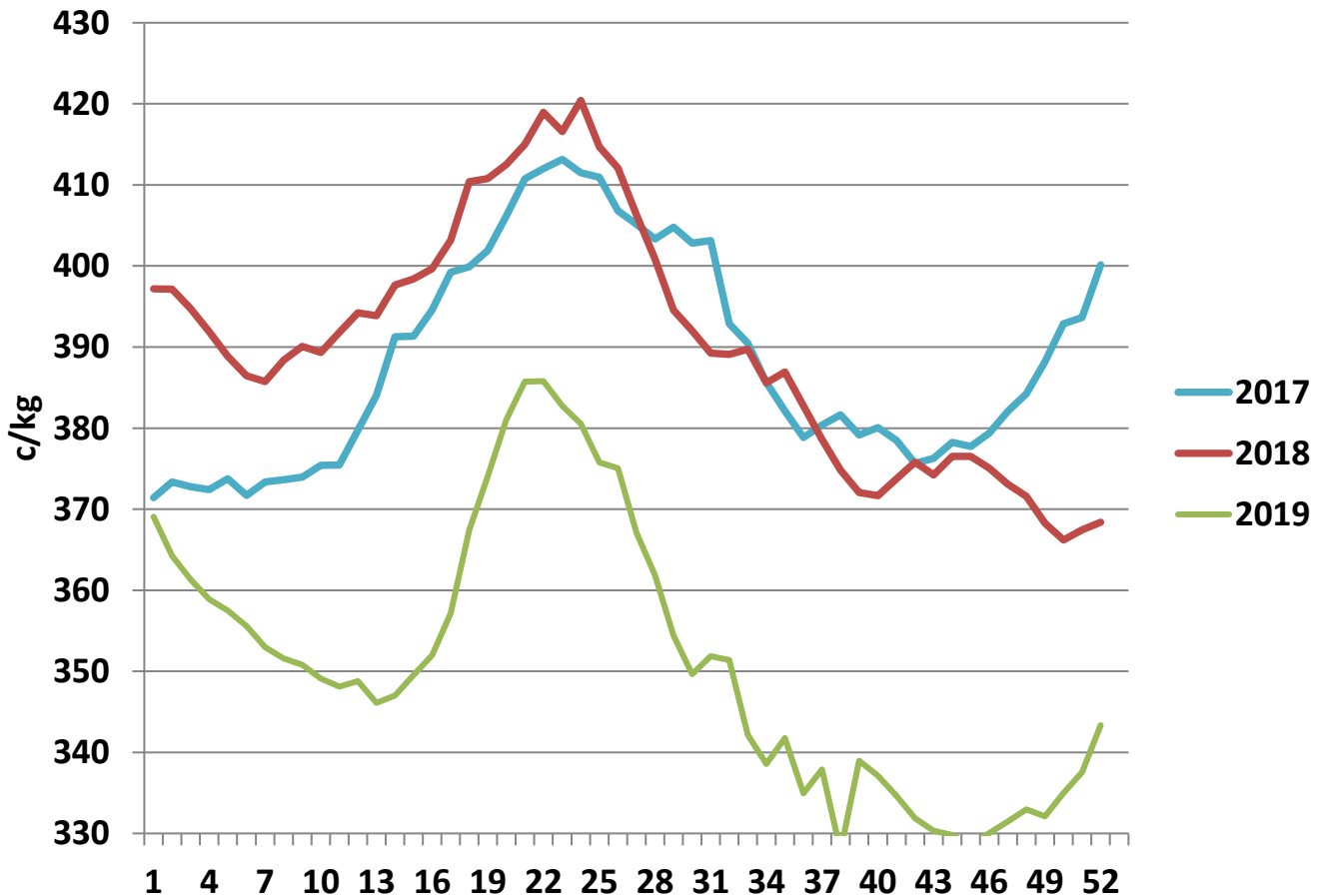
Livestock Pricing

	Ireland	NI	Britain	EU 14 Average	France	Germany
23/12/2019	355	399	397	369	387	378

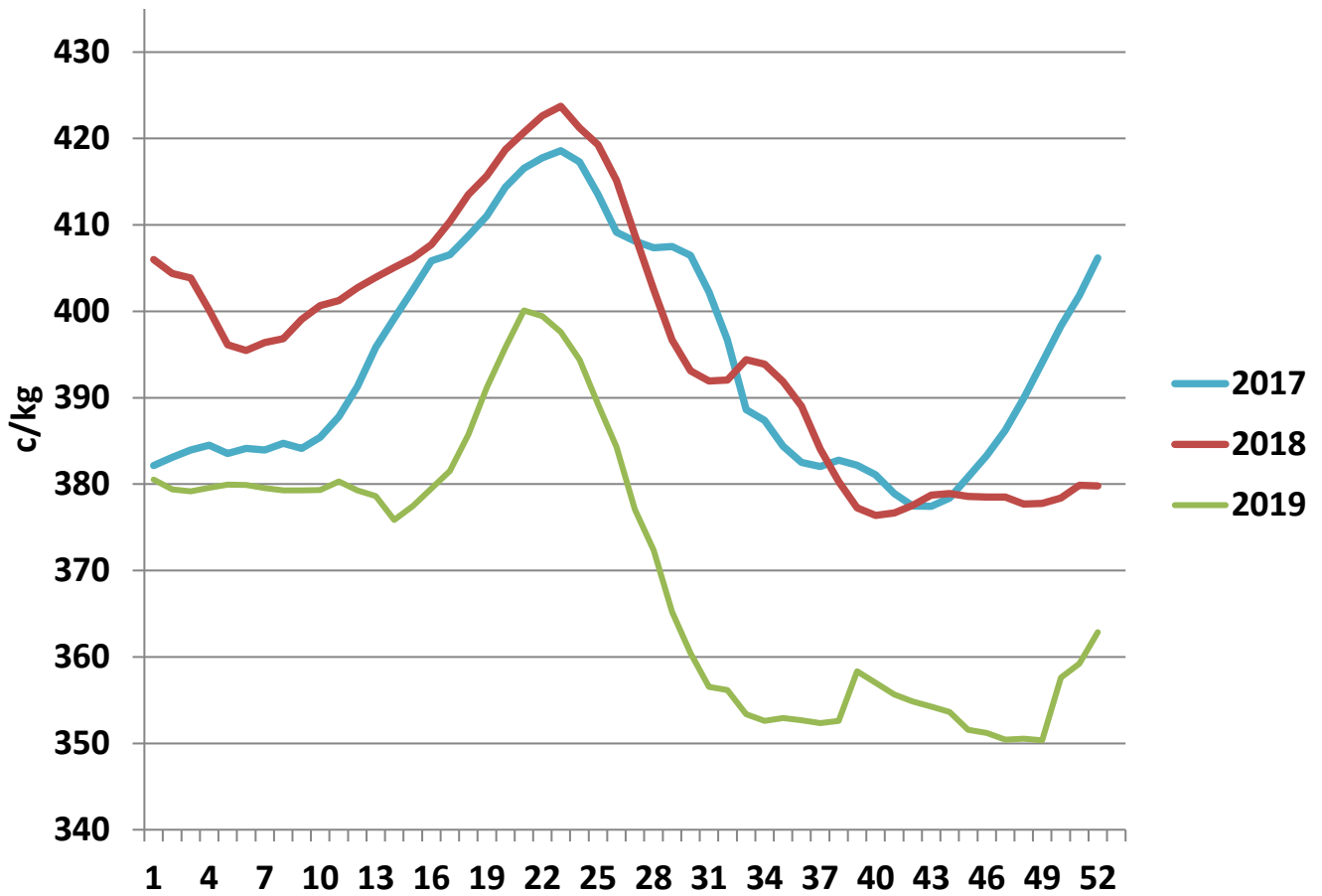
R3 Steer prices ex. VAT



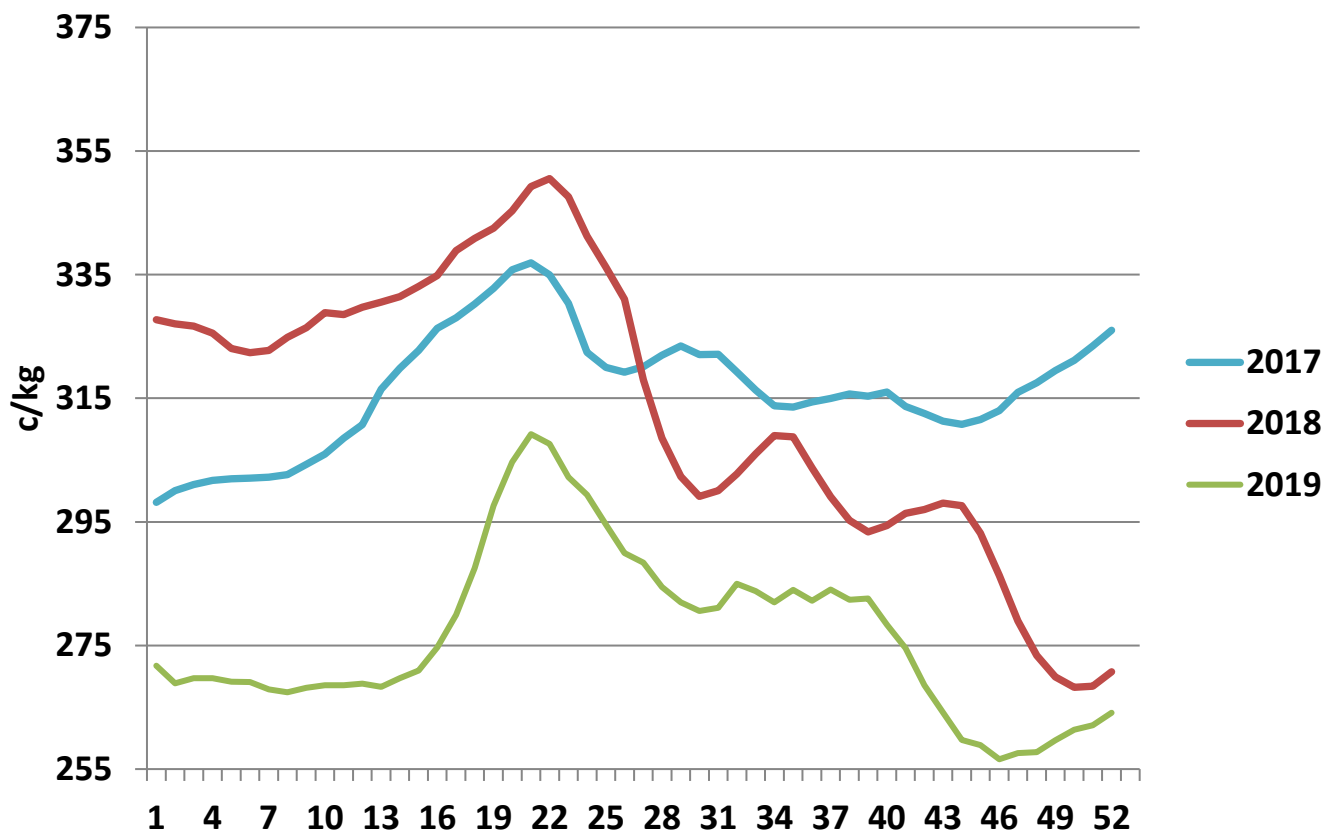
U3 Young Bull prices ex. VAT



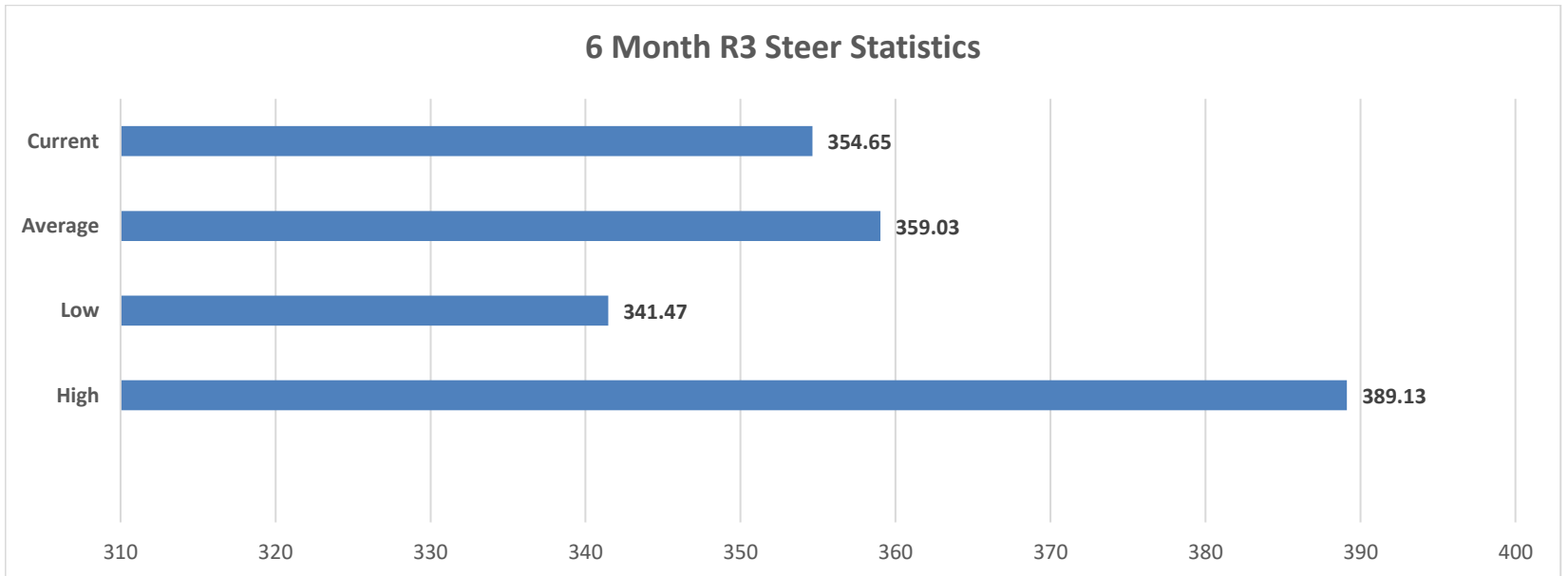
R3 Heifer prices ex. VAT



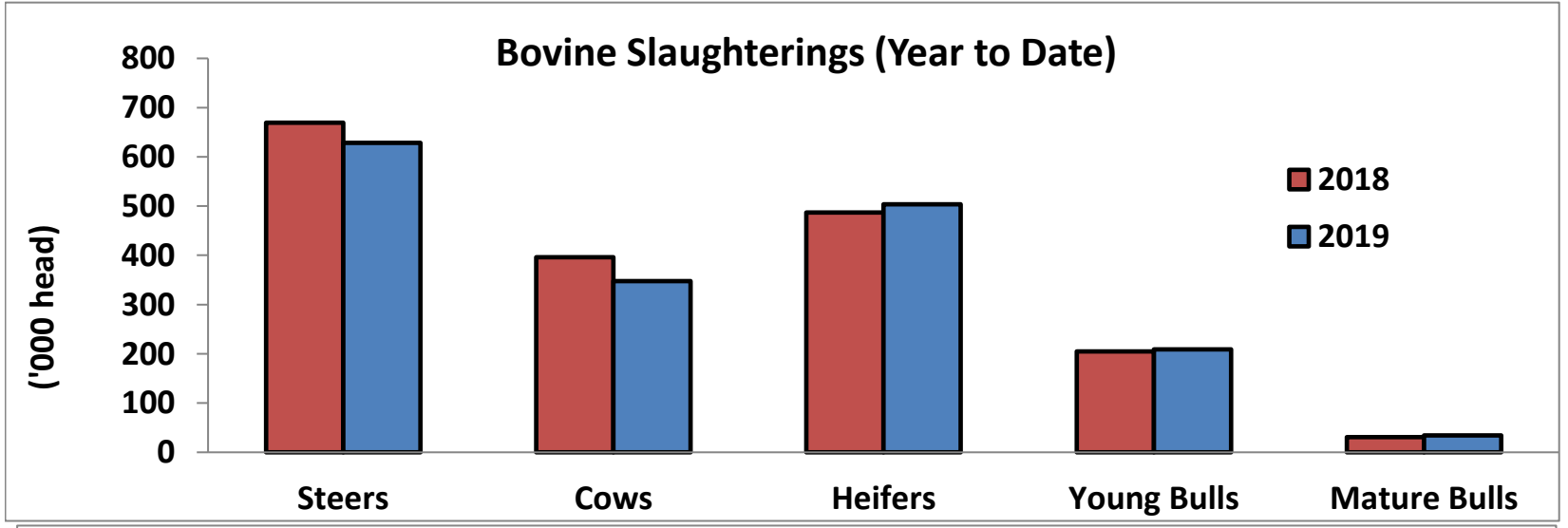
O4 Cow prices ex. VAT



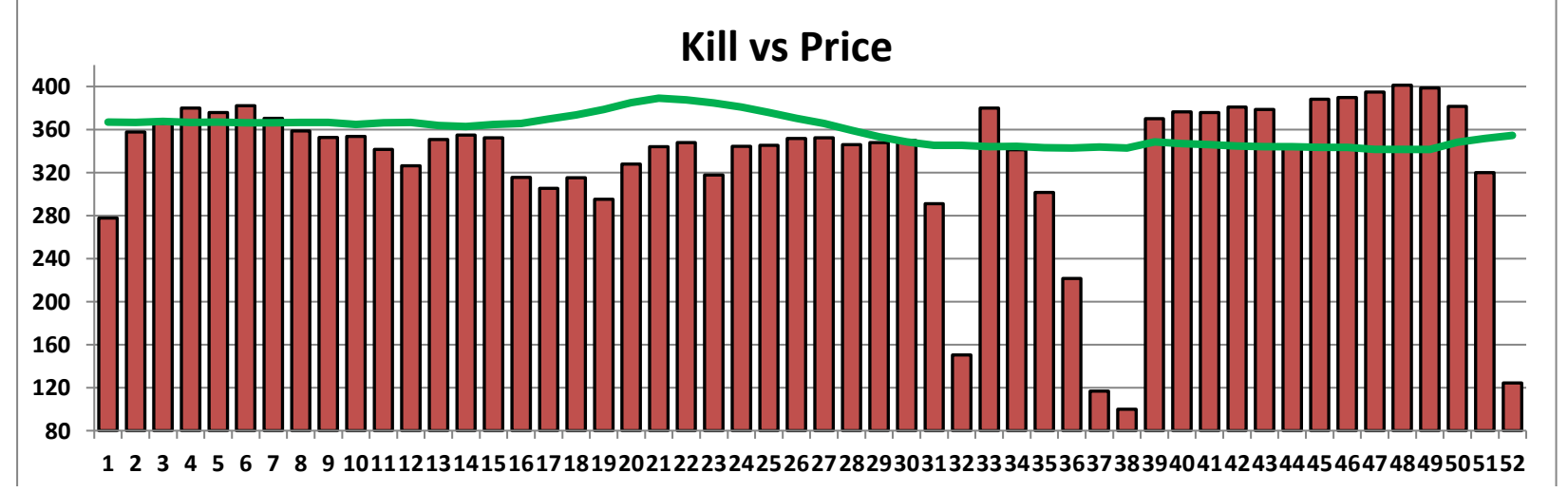
6 Month R3 Steer Statistics

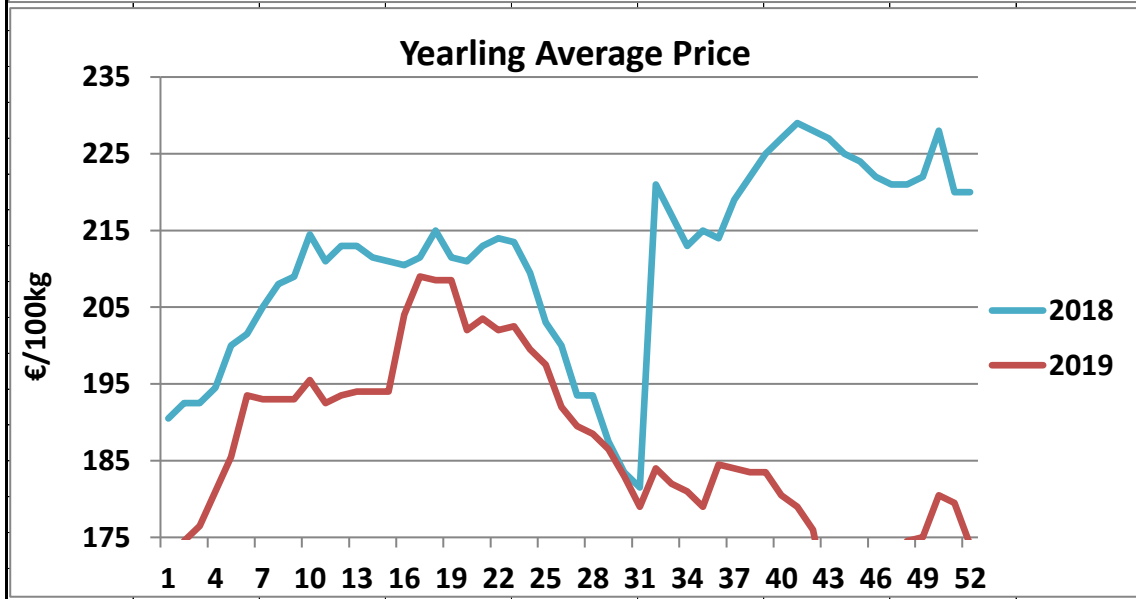
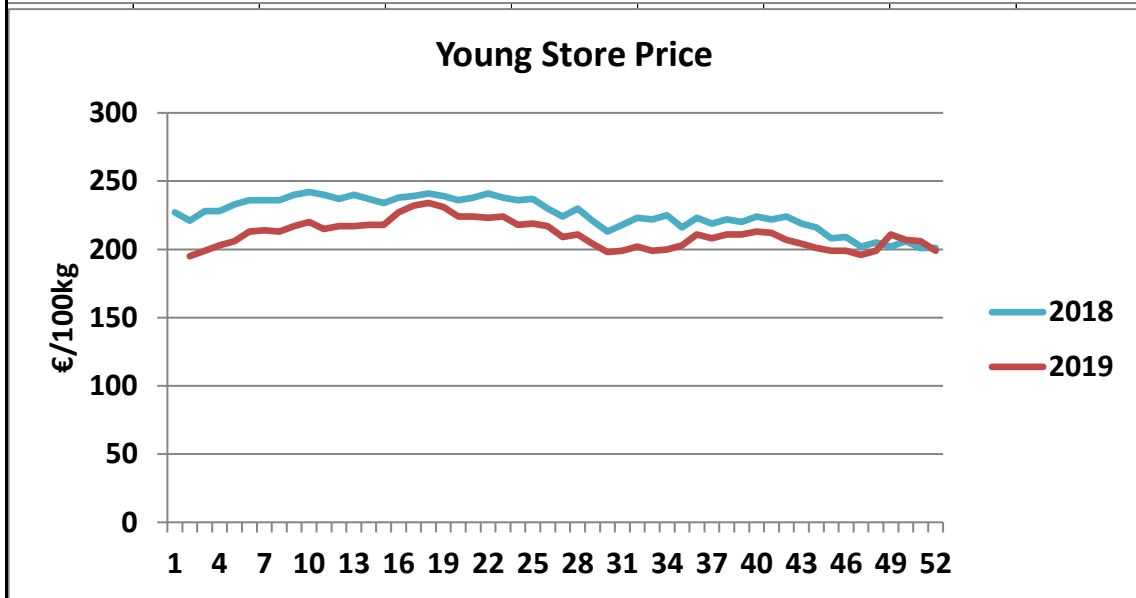
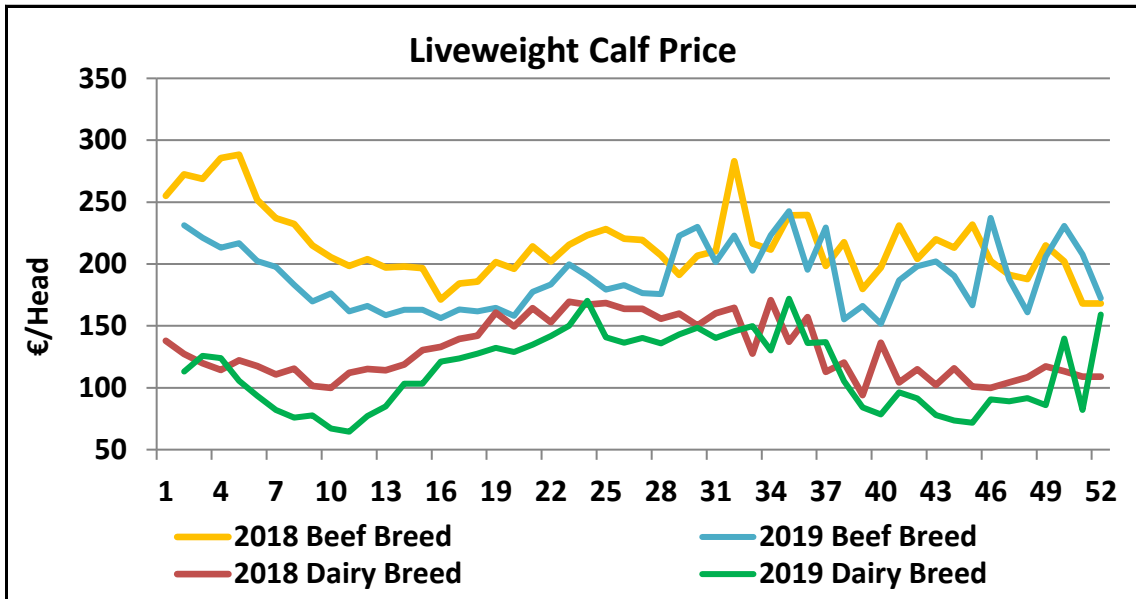


Bovine Slaughtering (Year to Date)

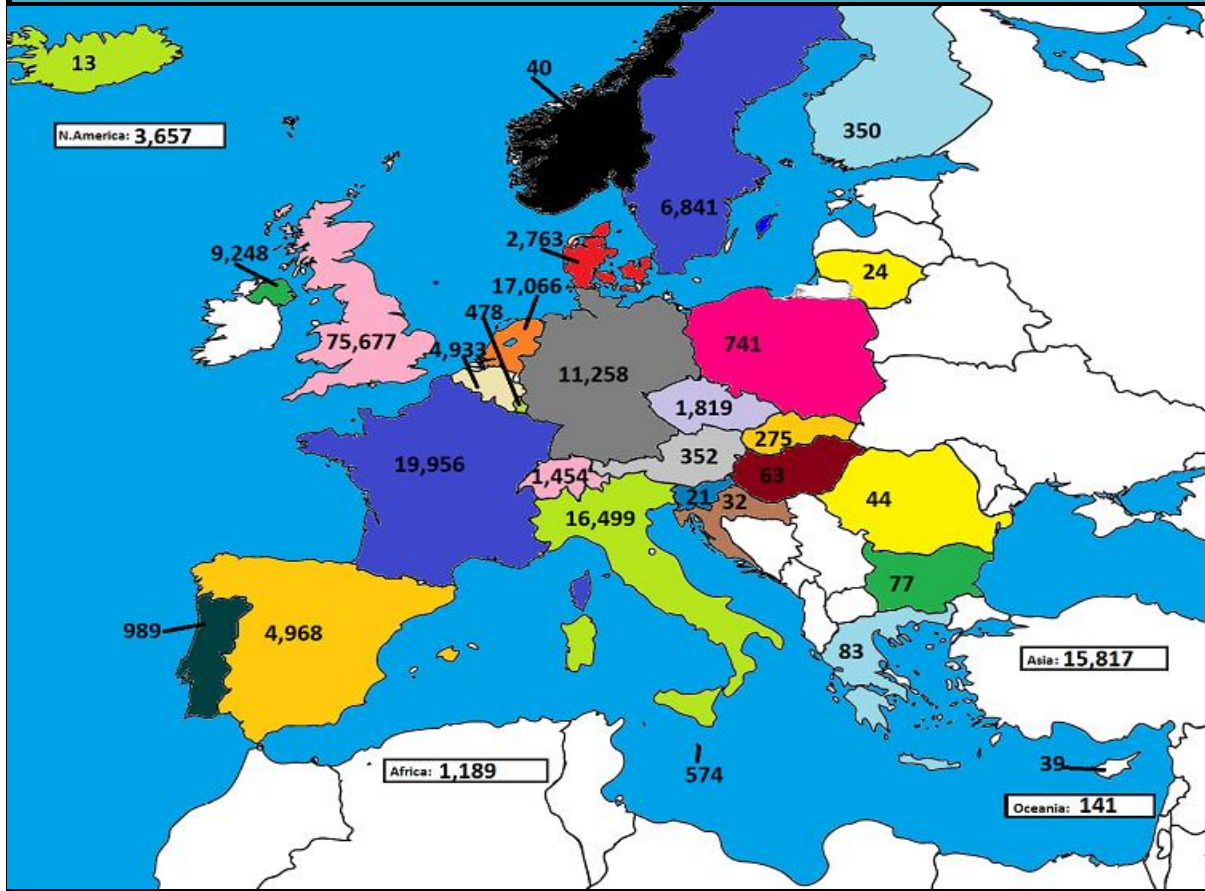


Kill vs Price

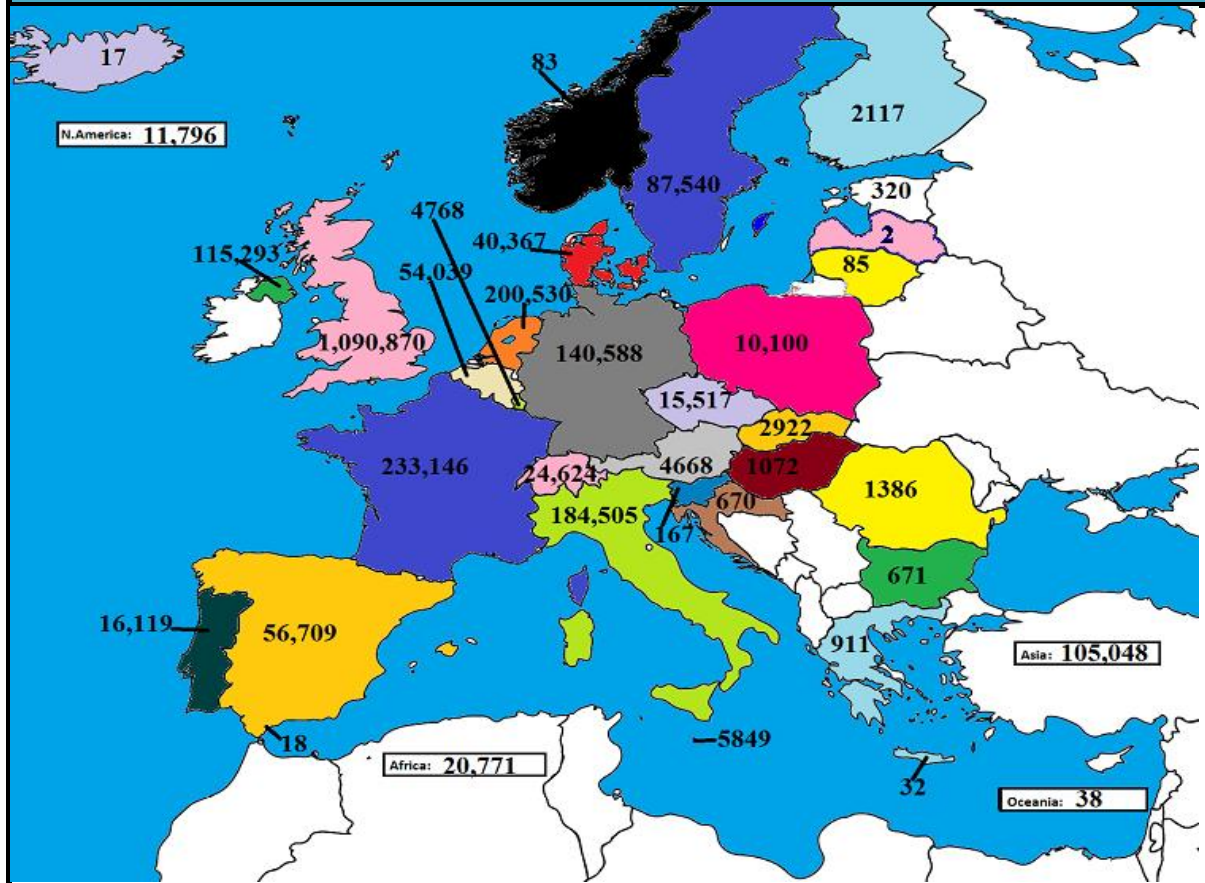




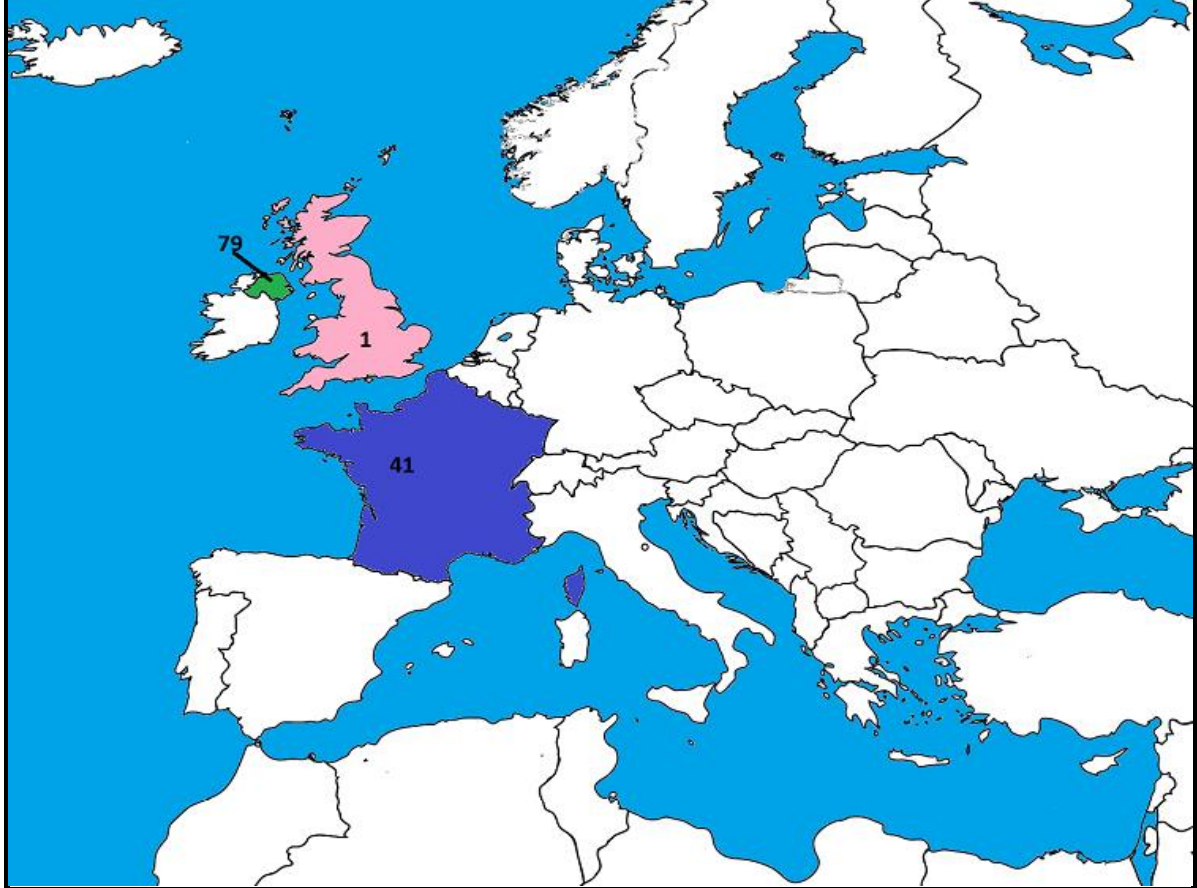
October 2019 Beef exports, €000 (CSO figures)



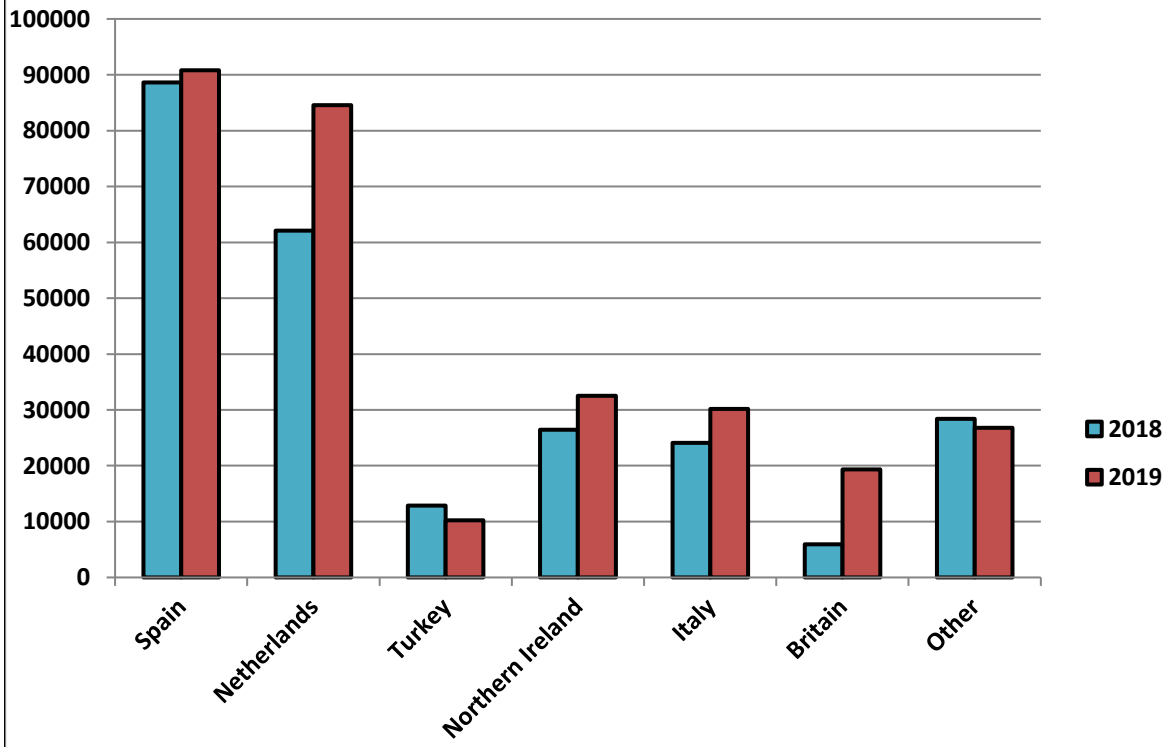
Cumulative beef exports to Dec 2018, €000 (CSO figures)

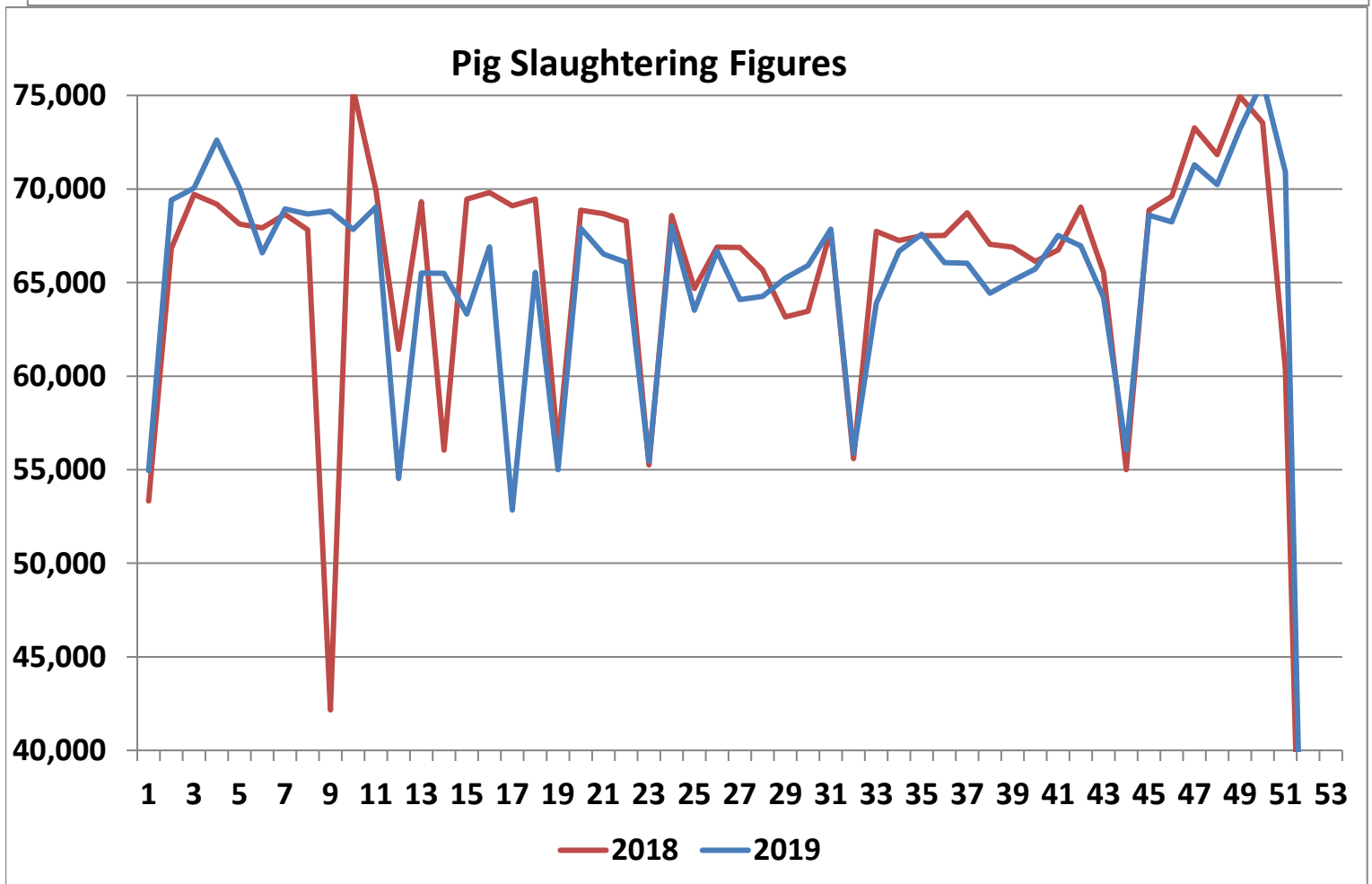
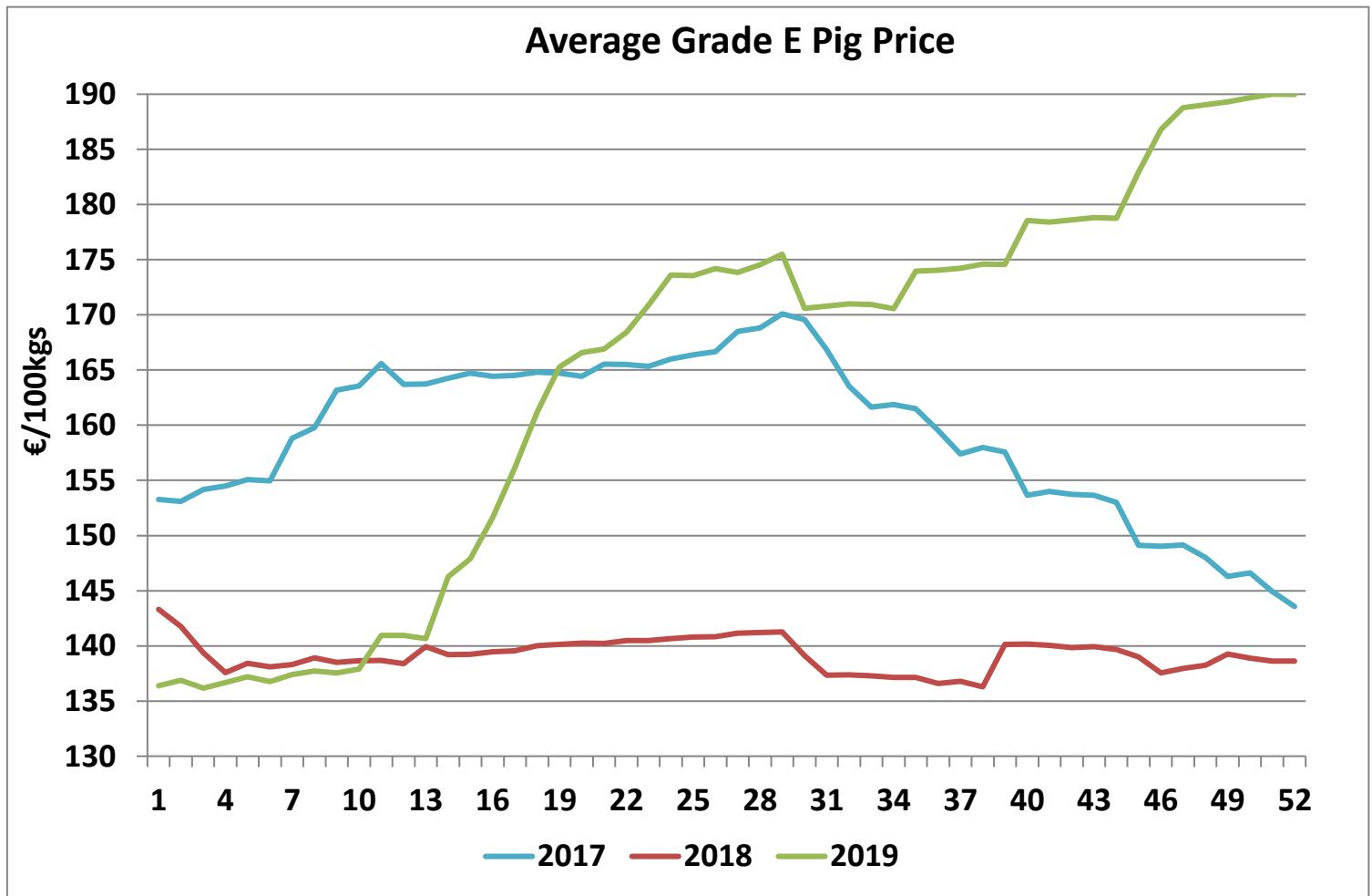


Cattle exported, w/c 23/12/19



Cumulative cattle export figures, 2019





Sheepmeat Information for Week 52

NOTE: EU PRICES
ARE PROVISIONAL AT
THE TIME OF
PUBLICATION AND
MAY NOT BE
REFLECTIVE OF THE
CURRENT PERIOD

Irish Prices €/100 kg	2019	2018	Change
Ave Factory Price	485.61	477.01	1.8%
Ave Mart Price	404.27	397.39	1.7%
National Ave Price	461.21	453.12	1.8%
YTD Ave	460.10	481.85	-4.5%

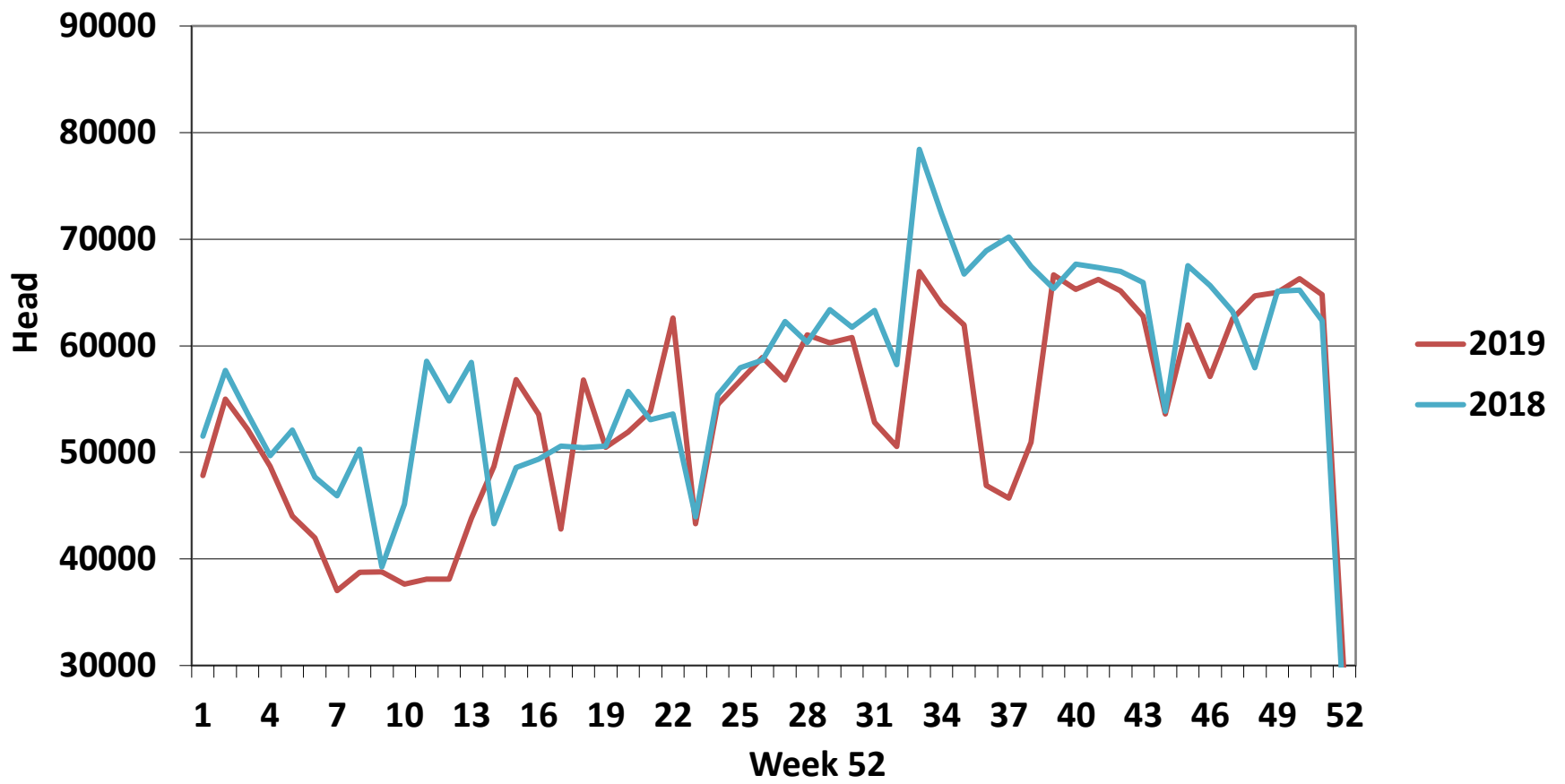
EU Market Rates Heavy Lambs	€/100kg
Belgium	465.9
Denmark	512.7
Germany	518.5
Spain	614.1
France	678.0
Croatia	461.9
Ireland	461.2
Italy	644.0
Cyprus	666.0
Latvia	360.1
Lithuania	331.6
Netherlands	472.7
Austria	599.0
Poland	465.6
Romania	178.1
Finland	384.5
Sweden	473.9
Northern Ireland	444.7
Great Britain	513.0
United Kingdom	508.1
Community	534.4

Slaughterings	2019	2018	Change
Weekly	28,300	24,124	17%
YTD	2,781,661	2,987,534	-7%

**REPORT ON SLAUGHTERING AT SHEEP EXPORT PREMISES
WEEK 52**

CATEGORY	2019		2018		DIFFERENCE	
	Weekly	Cumulative	Weekly	Cumulative	Weekly	Cumulative
Lambs/Hoggets	8	739,027	19	829,906	-11	- 90,879
Spring Lambs	26,710	1,634,336	22,230	1,653,201	4,480	- 18,865
Ewes and Rams	1,581	406,663	1,875	504,246	-294	- 97,583
Light Lambs	1	1,635		181	1	1,454
TOTAL	28,300	2,781,661	24,124	2,987,534	4,176	-205,873

Weekly Sheep Slaughterings



Ave. Price €/100 kg for Sheepmeat

